

OMEGA Jobsite Mock-up

PRODUCTS INTERNATIONAL

TECHNICAL BULLETIN

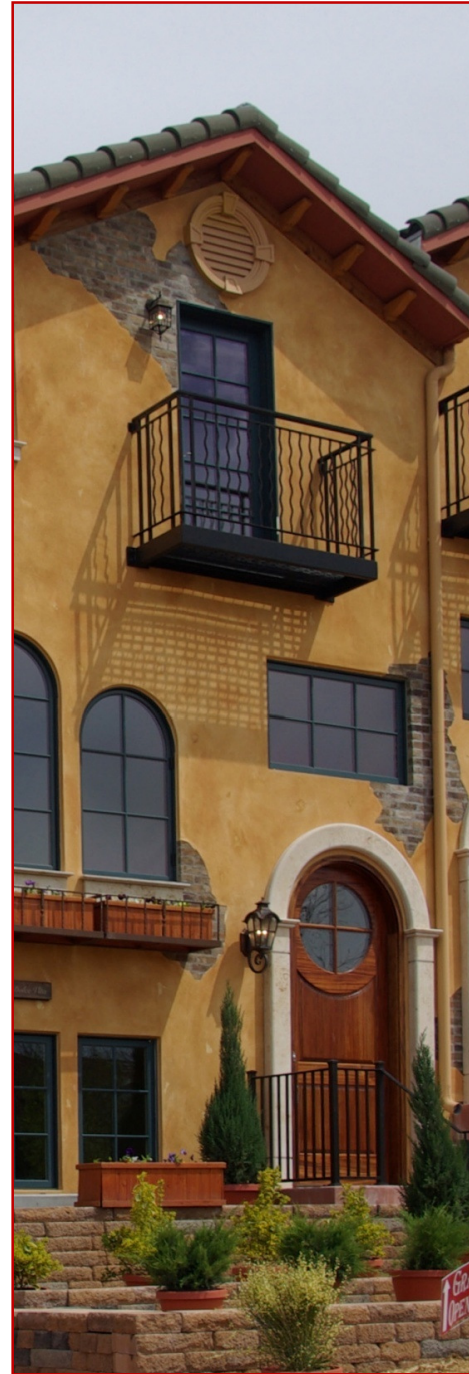
The Importance of Using a Jobsite Mock-up for Color Selection

The lab samples and color charts are provided by Omega Products International to assist in the initial color selection and are only approximations of the final color. The actual color will vary due to climatic conditions, job conditions, method of application, mixing techniques, and other factors. For those reasons and to minimize jobsite color problems, Omega Products International requires the use of a jobsite mock-up to select the final color.

A mock-up is a full-sized sample wall used to display actual color and texture under normal jobsite conditions. To create a mock-up, either construct a free standing wall or designate a small wall of the building to apply the specified plaster system. The mock-up must use the same techniques, materials, and installations procedures that will be used during the actual application. The use of other components of the building, such as roofing, windows, trims, and masonry, is recommended to insure overall color compatibility. The mock-up must be approved by the appropriate parties prior to the actual application and should remain on the jobsite until the completion of the project.

During initial color application, the applicator must verify the color and texture is as approved on the mock-up. Omega Products has a strict quality control program to help ensure that the color is consistent and will match the provided sample. However, if the finish is improperly factory tinted, Omega Products' policy is to replace the unopened material and up to 100 ft² of applied material.

Omega Products warrants our finishes to be free from defects in material and shall perform to standards specified in Omega literature, specifications and appropriate published reports.



www.omega-products.com

Disclaimer

Omega Products International, Inc. [Manufacturer] MAKES NO WARRANTY OF MERCHANTABILITY OR FITNESS FOR A PARTICULAR PURPOSE WITH RESPECT TO THE PRODUCT(S) SOLD HEREIN. The recommendations, suggestions, statements and technical data are based on the best knowledge available to Manufacturer and are given for informational purposes ONLY and without any responsibility for their use. It is expressly understood and agreed, as a condi-

tion of the use of this product, that the buyer's sole and exclusive remedy for any claimed defective product against Manufacturer shall be the replacement of products actually proven to be defective. Handling and use of the products are beyond the control of Manufacturer; therefore, no warranty is made, expressed or implied, as to the results obtained from the use of the product or against any claims for infringement of patents resulting from use of the

product. Under no circumstances shall Manufacturer be liable for incidental or consequential damages arising out of the use or the improper application of the product. Before applying the product, the user shall determine the suitability of the product for his/her independent use, assuming all risks and liability whatsoever in connection therewith. This writing constitutes a complete and exclusive statement of the understanding between Manufacturer and Buyer.

Technical Assistance

Technical assistance and information is available by calling Omega Products International, Inc. at (800) 600-6634 or FAX (951) 520-2594 or by e-mail at "info@omega-products.com".



The Professional's Choice