

# AkroFlex Barrier EIFS

## A Class PB Exterior Insulation and Finish System

**AKROFLEX BARRIER EXTERIOR INSULATION AND FINISH SYSTEM (EIFS)** is a lightweight, multi-component exterior wall assembly. EIFS can resemble traditional stucco, while offering additional energy efficiency, design versatility, weatherability, and durability. For these reasons, EIFS has become one of the most popular cladding options with billions of square feet installed on buildings around the world. Omega Products International is a leader in the EIFS industry with decades of successful installations.

### SYSTEM DESCRIPTION

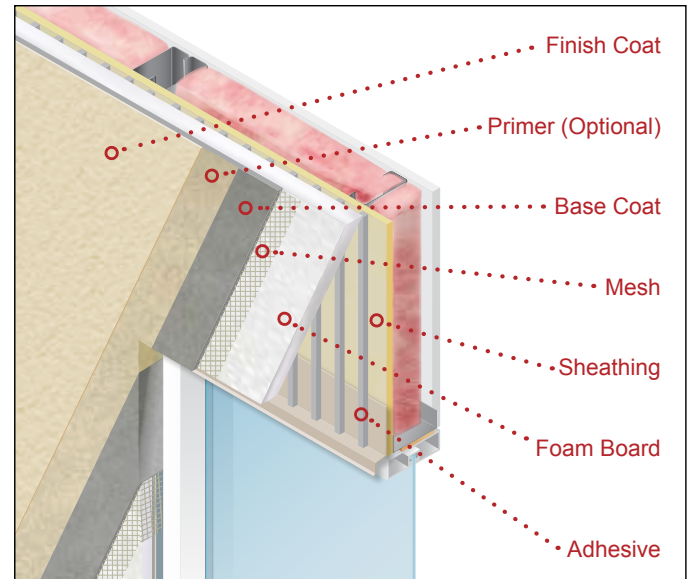
The AkroFlex Barrier EIF System is a Class PB barrier system designed to keep moisture on the outer surface of the wall and out of the wall assembly. The AkroFlex Barrier System consists of EPS foam board adhesively attached over approved, properly prepared sheathing. A base coat is applied over the foam board with fiberglass mesh fully embedded in the base coat. Lastly, primer (optional) and AkroFlex 100% acrylic finish are applied.

### DESIGN CONSIDERATIONS

- May be applied over the following:
  - Steel or wood framed construction with the following substrates:
    - ASTM C1396 water-resistant gypsum sheathing
    - ASTM C1177 glassmat faced gypsum sheathing
    - ASTM C1325 cement boards
    - ASTM C1278 gypsum fiber panels
    - Exterior grade or exposure 1 plywood
    - Exposure 1 OSB
  - Poured concrete or masonry
- May be applied over fire-resistive-rated construction without adversely affecting the rating or is available in EIFS specific fire-resistive-rated assemblies
- Available in non-combustible assemblies (NFPA 285)
- May be panelized to meet project construction needs
- Visit [www.omega-products.com](http://www.omega-products.com) for additional design and installation requirements, including the Intertek CCRR-0466 report, specification (OP901), standard system details (APB), and individual product data sheets

### USES

The AkroFlex Barrier System is an excellent exterior wall cladding for new or retrofit commercial, or institutional projects. For framed walls in IBC Type V Group R1-R4 or IRC construction, an AkroFlex water managed system EIF must be used.



### AKROFLEX EIFS ADVANTAGES

FEATURES	BENEFITS
<i>Energy Efficient</i>	Reduces operating energy costs due to increased wall insulation and reduced air infiltration
<i>Design Flexibility</i>	Can be fashioned into virtually any shape or design and is available in a wide selection of colors and textures
<i>Lightweight</i>	Reduces the structural load requirements
<i>Weather-Resistant</i>	Protects integrity of the building envelope
<i>Durable</i>	Fade, crack, abrasion, and dirt pickup resistant; low life cycle costs
<i>System Warranty</i>	Up to 18-years when used in combination with other Omega products

Approved by: \_\_\_\_\_

Date: \_\_\_\_\_



# AkroFlex Barrier EIFS

## A Class PB Exterior Insulation and Finish System

### ADHESIVES AND BASE COATS

The following products may be used as an adhesive and/or base coat:

FEATURES	USE	PACKAGING	SPECIAL USES
StyroBond	Adhesive	Pail (5gal, 65lb)	Can be used over wood sheathing
StyroGlue	Adhesive or Base Coat	Pail (5gal, 55lb)	
StyroGlue DryBond	Adhesive or Base Coat	Bag (50lb)	
StyroGlue Plus	Adhesive or Base Coat	Pail (5gal, 55lb)	Higher water-resistance
StyroGlue TF	Base Coat	Pail (5gal, 65lb)	Fiber-reinforced, tintable

### WATER-RESISTIVE / AIR BARRIER ASSEMBLY (OPTIONAL)<sup>2</sup>

AkroGuard Water-Resistive Air Barrier Assembly consists of a field applied, non-cementitious, flexible coating and joint/transition treatments that create a water-resistive air barrier assembly.

### EPS FOAM BOARD<sup>1</sup>

Type I EPS board complying with ASTM C578 with a nominal density of 1 pound per cubic foot, a flame-spread rating of 25 or less, a smoke-developed rating not exceeding 450, and a thickness of 1 to 4-inches.

### REINFORCING MESH

AkroFlex Meshes are alkali-resistant woven glass fiber fabrics specially designed to be used with AkroFlex EIFS Systems. Meshes are available in a range of weights that provide different levels of strength and impact resistance.

- Ultra Heavy Duty Mesh (20oz):** For locations needing the highest impact resistance, such as ground floors and high traffic areas.
- Heavy Duty Mesh (15oz):** For locations needing high impact resistance, such as ground floors and other higher traffic areas.
- Intermediate Mesh (11.5oz):** For locations needing additional impact resistance, such as medium traffic areas.
- Standard Mesh (4.2oz):** For locations needing standard impact resistance, such as second stories or other low traffic areas where impact is unlikely.
- Starter Mesh (4.2oz):** For back wrapping and detail work.

NOTE: Overlap all mesh joints minimum 2.5" (64mm). Ultra Heavy Duty and Heavy Duty Mesh should be tightly butted, not overlapped, and should be covered with a layer of Standard Mesh.

### DISCLAIMER

Omega Products International [Manufacturer] MAKES NO WARRANTY OF MERCHANTABILITY OR FITNESS FOR A PARTICULAR PURPOSE WITH RESPECT TO THE PRODUCT(S) SOLD HEREIN. The recommendations, suggestions, statements and technical data are based on the best knowledge available to Manufacturer and are given for informational purposes ONLY and without any responsibility for their use. It is expressly understood and agreed, as a condition of the use of this product, that the buyer's sole and exclusive remedy for any claimed defective product against Manufacturer shall be the replacement of products actually proven to be defective. Handling and use of the products are beyond the control of Manufacturer; therefore, no warranty is made, expressed or implied, as to the results obtained from the use of the product or against any claims for infringement of patents resulting from use of the product. Under no circumstance shall Manufacturer be liable for incidental or consequential damages arising out of the use of the improper application of the product. Before applying the product, the user shall determine the suitability of the product for their independent use, assuming all risks and liability whatsoever in connection therewith. This writing constitutes a complete and exclusive statement of the understanding between Manufacturer and Buyer.

### INSTALLATION & DESIGN REQUIREMENTS

- Substrates must be structurally sound, clean, dry, and free of all material that may reduce bonding of the adhesive.
- Maximum allowable deflection of structural wall components is 1/240 of the span.
- Sealants must be compatible with the adjacent EIFS components, be approved by Omega Products, and must meet ASTM C920 (Type S or M, minimum Grade NS, minimum Class 25, and Use O). Periodic sealant inspections required per sealant's manufacturer's requirements.
- Expansion joints are required at dissimilar substrates, floor lines in wood-framed construction in which lumber shrinkage will occur, where through wall expansion joints occur, where the EIFS abuts another material, and where structural movement is anticipated. Final expansion and control joint design and location are the responsibility of the design professional.
- Store and apply all component products per the product's data sheet.
- Do not use below grade. Terminate a minimum of 8-inches above grade, 6-inches above finished grade, or as specified by local code.
- System must be properly flashed and sealed to prevent moisture from entering the wall assembly.
- Do not apply system when the ambient and surface temperatures are below 40°F (4°C). The use of OmegaCure will improve the hydration of cement-based adhesives and base coats at low temperatures.

### PRIMER (OPTIONAL)<sup>2</sup>

AkroFlex Base Primer is 100% acrylic-based primer designed to promote bond strength, color consistency and uniform suction, while increasing water resistance.

### AKROFLEX FINISHES

AkroFlex 100% acrylic based finishes use the latest Dirt Pickup Resistance (DPR) technology, to provide long lasting, weather-resistant, durable finishes that will resist discoloration, fading, or mold growth. A wide variety of textures are possible depending on the finish choice and application method. AkroLastic (elastomeric) or AkroSil (silicone enhanced) finishes are also available.

<sup>1</sup> Manufactured by others.

<sup>2</sup> The use of primer and/or AkroGuard will increase the length of the system's warranty.

### CLAIMS

Any Claimant shall notify Manufacturer immediately in writing of any alleged defect in the material. Claimant will provide Manufacturer with a reasonable and exclusive opportunity to investigate and test for the alleged defect. For any claim that is not valid Claimant agrees to pay Omega's reasonable charges, including travel and labor associated with investigation of such claim.

### TECHNICAL ASSISTANCE

Technical assistance and information is available by calling Omega Products International at (951) 737-7447 or by email at info@omega-products.com.

### WARRANTY

The following is made in lieu of all expressed and implied rights, warranties and conditions, statutory or otherwise. The manufacturer's only obligation shall be to replace such quantity of products proven to be defective within one year following the date of manufacture, provided that the alleged defective product is returned prepaid to the manufacturer's plant and is accompanied with proof of purchase and batch number.

omega-products.com