



# Three Coat Stucco System

## TYPICAL DETAILS

### Table of Contents

TCS 01.....APPLICATION OVER APPROVED SHEATHING

TCS 02 .....TYPICAL TERMINATION AT FOUNDATION

TCS 03 ..... TYPICAL CORNER DETAILS

TCS 04 .....TYPICAL CONTROL JOINT

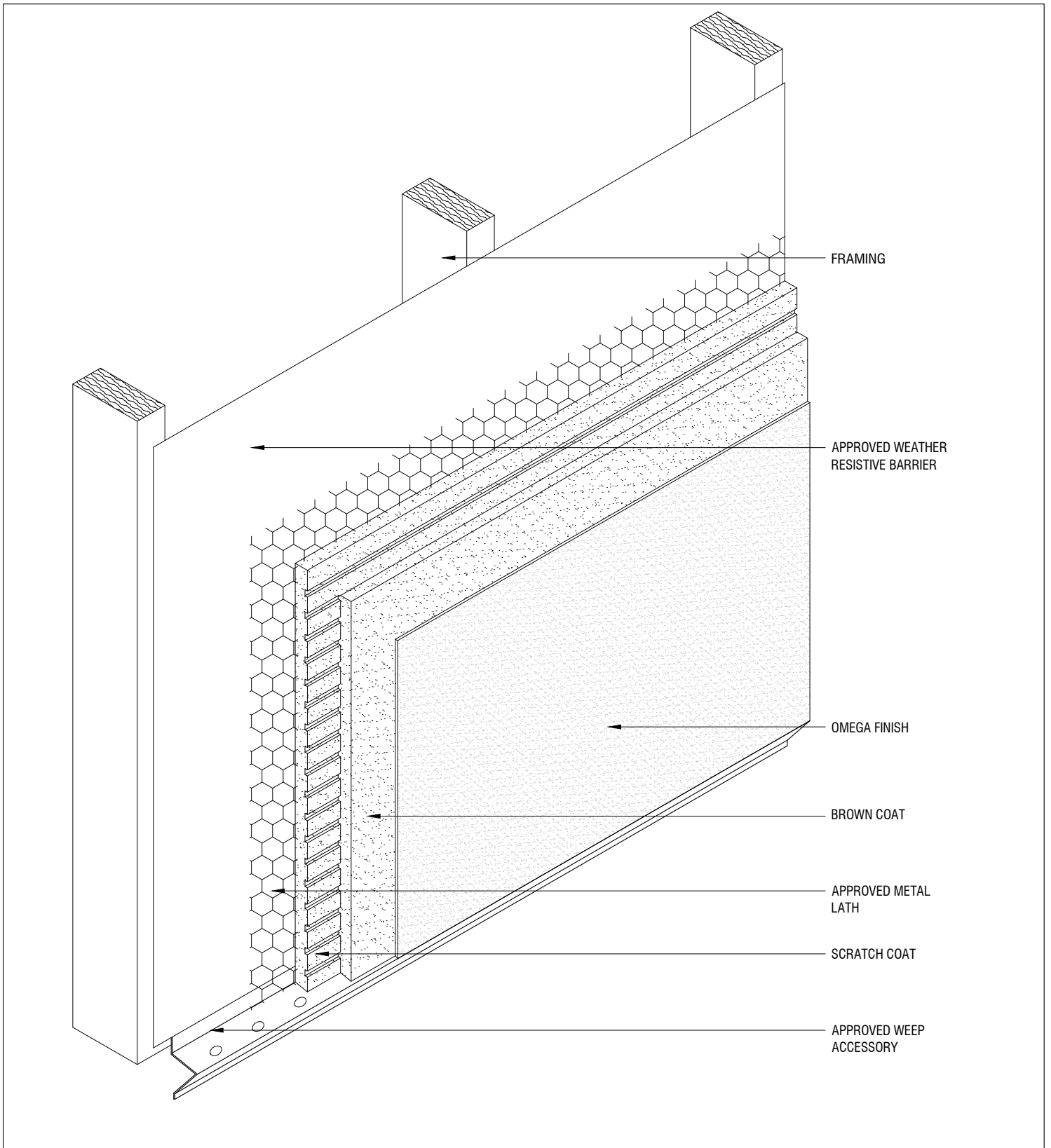
TCS 05 ..... TYPICAL EXPANSION JOINTS

TCS 06 ..... TYPICAL TERMINATION AT WINDOW HEAD AND SILL

TCS 07.....TYPICAL FOAM PLANT-ONS

#### DISCLAIMER

Omega Products International [Manufacturer] MAKES NO WARRANTY OF MERCHANTABILITY OR FITNESS FOR A PARTICULAR PURPOSE WITH RESPECT TO THE PRODUCT(S) SOLD HEREIN. The recommendations, suggestions, statements and technical data are based on the best knowledge available to Manufacturer and are given for informational purposes ONLY and without any responsibility for their use. It is expressly understood and agreed, as a condition of the use of this product, that the buyer's sole and exclusive remedy for any claimed defective product against Manufacturer shall be the replacement of products actually proven to be defective. Handling and use of the products are beyond the control of Manufacturer; therefore, no warranty is made, expressed or implied, as to the results obtained from the use of the product or against any claims for infringement of patents resulting from use of the product. Under no circumstance shall Manufacturer be liable for incidental or consequential damages arising out of the use or the improper application of the product. Before applying the product, the user shall determine the suitability of the product for his/her independent use, assuming all risks and liability whatsoever in connection therewith. This writing constitutes a complete and exclusive statement of the understanding between Manufacturer and Buyer.



THE ARCHITECTURE, ENGINEERING, AND DESIGN OF THE PROJECT USING OMEGA PRODUCTS IS THE RESPONSIBILITY OF THE PROJECT'S DESIGN PROFESSIONAL. ALL SYSTEMS MUST COMPLY WITH LOCAL BUILDING CODES AND STANDARDS. THIS DETAIL IS FOR GENERAL INFORMATION AND GUIDANCE ONLY, AND OMEGA SPECIFICALLY DISCLAIMS ANY LIABILITY FOR THE USE OF THIS DETAIL AND FOR THE ARCHITECTURE, DESIGN, ENGINEERING, OR WORKMANSHIP OF ANY PROJECT. THE PROJECT DESIGN PROFESSIONAL DETERMINES, IN ITS SOLE DISCRETION, WHETHER THIS DETAIL OR A FUNCTIONALLY EQUIVALENT ALTERNATIVE IS BEST SUITED FOR THE THE PROJECT. USE OF A FUNCTIONALLY EQUIVALENT DETAIL DOES NOT VIOLATE OMEGA'S WARRANTY. THIS DETAIL IS SUBJECT TO CHANGE WITHOUT NOTICE. CONTACT OMEGA TO INSURE YOU HAVE THE MOST RECENT VERSION.



CORPORATE OFFICE  
 1681 CALIFORNIA AVE., CORONA, CA 92881  
 E-MAIL: [INFO@OMEGA-PRODUCTS.COM](mailto:INFO@OMEGA-PRODUCTS.COM)  
 WEBSITE: [WWW.OMEGA-PRODUCTS.COM](http://WWW.OMEGA-PRODUCTS.COM)

## THREE COAT SYSTEM DETAILS

### APPLICATION OVER APPROVED SHEATHING

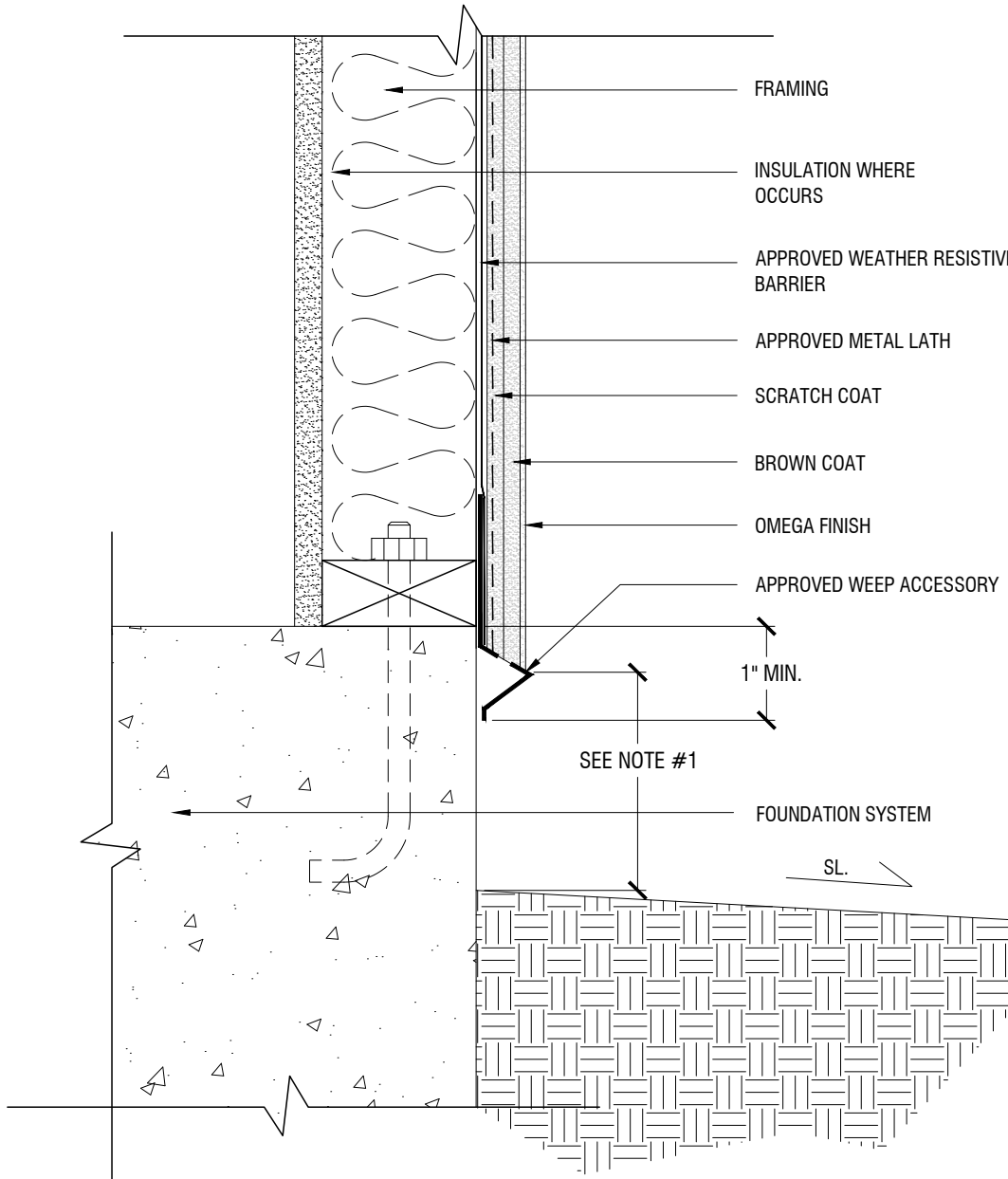
SCALE: 3"=1'-0"

DRAWING NO.: TCS 01.00

DRAWN: MARCH 2017

## NOTES

1. 4" MIN. ABOVE GRADE, 2" MIN. ABOVE PAVED SURFACES/HARDSCAPE, OR AS SPECIFIED BY LOCAL CODE



THE ARCHITECTURE, ENGINEERING, AND DESIGN OF THE PROJECT USING OMEGA PRODUCTS IS THE RESPONSIBILITY OF THE PROJECT'S DESIGN PROFESSIONAL. ALL SYSTEMS MUST COMPLY WITH LOCAL BUILDING CODES AND STANDARDS. THIS DETAIL IS FOR GENERAL INFORMATION AND GUIDANCE ONLY, AND OMEGA SPECIFICALLY DISCLAIMS ANY LIABILITY FOR THE USE OF THIS DETAIL AND FOR THE ARCHITECTURE, DESIGN, ENGINEERING, OR WORKMANSHIP OF ANY PROJECT. THE PROJECT DESIGN PROFESSIONAL DETERMINES, IN ITS SOLE DISCRETION, WHETHER THIS DETAIL OR A FUNCTIONALLY EQUIVALENT ALTERNATIVE IS BEST SUITED FOR THE THE PROJECT. USE OF A FUNCTIONALLY EQUIVALENT DETAIL DOES NOT VIOLATE OMEGA'S WARRANTY. THIS DETAIL IS SUBJECT TO CHANGE WITHOUT NOTICE. CONTACT OMEGA TO INSURE YOU HAVE THE MOST RECENT VERSION.



CORPORATE OFFICE  
1681 CALIFORNIA AVE., CORONA, CA 92881  
E-MAIL: [INFO@OMEGA-PRODUCTS.COM](mailto:INFO@OMEGA-PRODUCTS.COM)  
WEBSITE: [WWW.OMEGA-PRODUCTS.COM](http://WWW.OMEGA-PRODUCTS.COM)

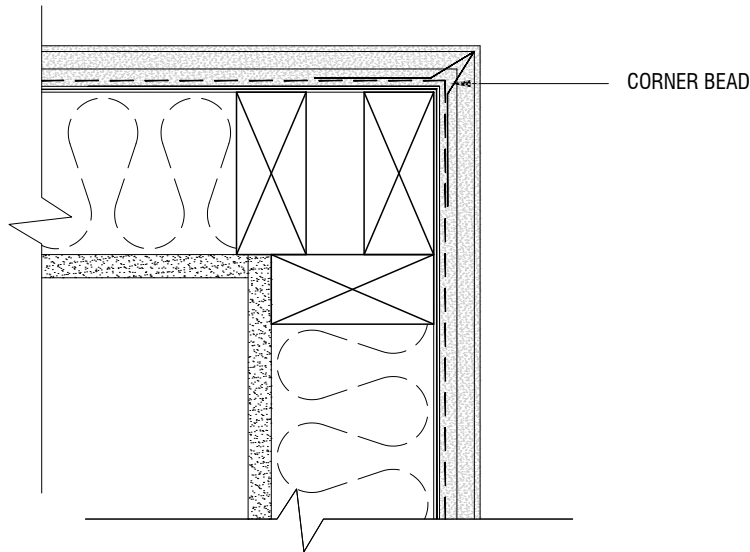
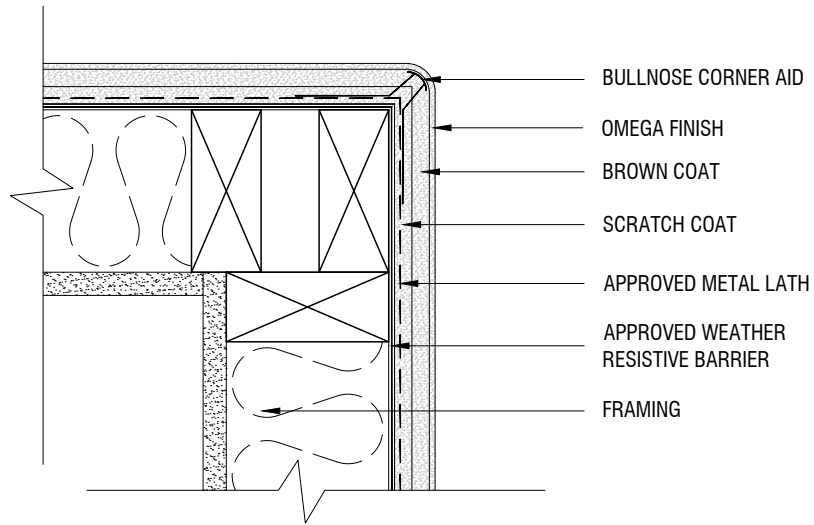
## THREE COAT SYSTEM DETAILS

### TYPICAL TERMINATION AT FOUNDATION

SCALE: 3"=1'-0"

DRAWING NO.: TCS 02.00

DRAWN: MARCH 2017



THE ARCHITECTURE, ENGINEERING, AND DESIGN OF THE PROJECT USING OMEGA PRODUCTS IS THE RESPONSIBILITY OF THE PROJECT'S DESIGN PROFESSIONAL. ALL SYSTEMS MUST COMPLY WITH LOCAL BUILDING CODES AND STANDARDS. THIS DETAIL IS FOR GENERAL INFORMATION AND GUIDANCE ONLY, AND OMEGA SPECIFICALLY DISCLAIMS ANY LIABILITY FOR THE USE OF THIS DETAIL AND FOR THE ARCHITECTURE, DESIGN, ENGINEERING, OR WORKMANSHIP OF ANY PROJECT. THE PROJECT DESIGN PROFESSIONAL DETERMINES, IN ITS SOLE DISCRETION, WHETHER THIS DETAIL OR A FUNCTIONALLY EQUIVALENT ALTERNATIVE IS BEST SUITED FOR THE THE PROJECT. USE OF A FUNCTIONALLY EQUIVALENT DETAIL DOES NOT VIOLATE OMEGA'S WARRANTY. THIS DETAIL IS SUBJECT TO CHANGE WITHOUT NOTICE. CONTACT OMEGA TO INSURE YOU HAVE THE MOST RECENT VERSION.



CORPORATE OFFICE  
 1681 CALIFORNIA AVE., CORONA, CA 92881  
 E-MAIL: [INFO@OMEGA-PRODUCTS.COM](mailto:INFO@OMEGA-PRODUCTS.COM)  
 WEBSITE: [WWW.OMEGA-PRODUCTS.COM](http://WWW.OMEGA-PRODUCTS.COM)

## THREE COAT SYSTEM DETAILS

### TYPICAL CORNER DETAILS

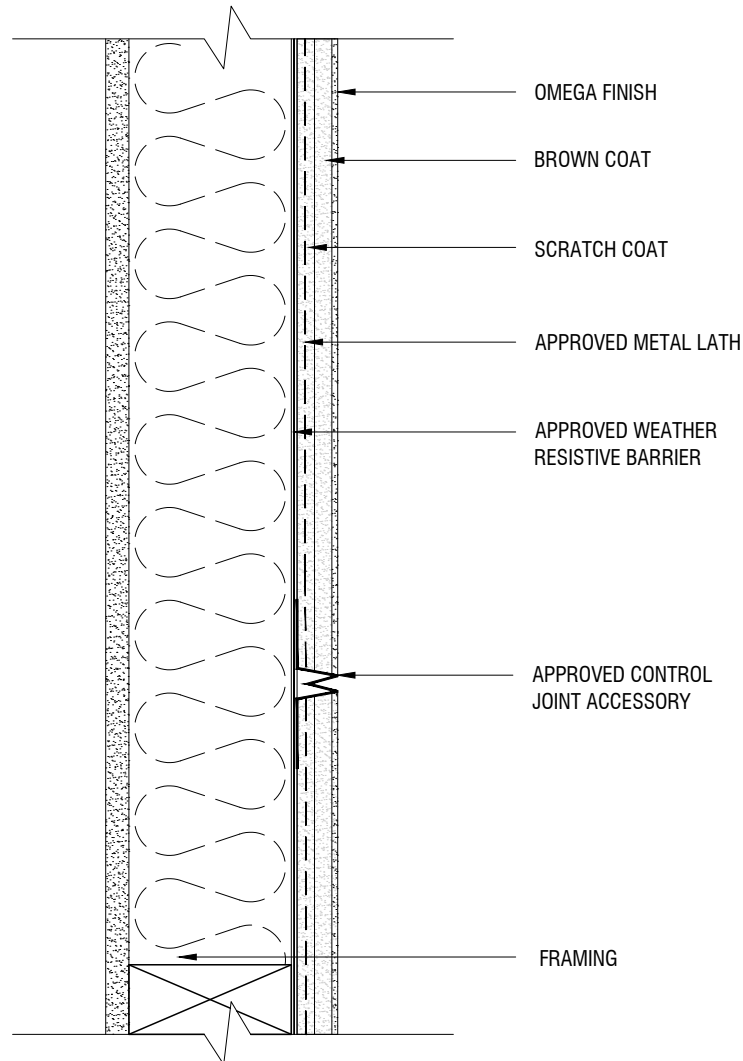
SCALE: 3"=1'-0"

DRAWING NO.: TCS 03.00

DRAWN: MARCH 2017

### NOTES

1. RESTRICT USE OF THIS DETAIL TO AREA WHERE MINIMAL MOVEMENT IS ANTICIPATED.
2. IF MOVEMENT IS ANTICIPATED REFER TO OMEGA TCS 05.00.
3. AESTHETIC JOINTS MAY BE INSTALLED OVER METAL LATH AND WIRE TIED.
4. AN OPTIONAL FLASHING MEMBRANE MAY BE USED BEHIND THE EXPANSION JOINT.



THE ARCHITECTURE, ENGINEERING, AND DESIGN OF THE PROJECT USING OMEGA PRODUCTS IS THE RESPONSIBILITY OF THE PROJECT'S DESIGN PROFESSIONAL. ALL SYSTEMS MUST COMPLY WITH LOCAL BUILDING CODES AND STANDARDS. THIS DETAIL IS FOR GENERAL INFORMATION AND GUIDANCE ONLY, AND OMEGA SPECIFICALLY DISCLAIMS ANY LIABILITY FOR THE USE OF THIS DETAIL AND FOR THE ARCHITECTURE, DESIGN, ENGINEERING, OR WORKMANSHIP OF ANY PROJECT. THE PROJECT DESIGN PROFESSIONAL DETERMINES, IN ITS SOLE DISCRETION, WHETHER THIS DETAIL OR A FUNCTIONALLY EQUIVALENT ALTERNATIVE IS BEST SUITED FOR THE THE PROJECT. USE OF A FUNCTIONALLY EQUIVALENT DETAIL DOES NOT VIOLATE OMEGA'S WARRANTY. THIS DETAIL IS SUBJECT TO CHANGE WITHOUT NOTICE. CONTACT OMEGA TO INSURE YOU HAVE THE MOST RECENT VERSION.



CORPORATE OFFICE  
 1681 CALIFORNIA AVE., CORONA, CA 92881  
 E-MAIL: [INFO@OMEGA-PRODUCTS.COM](mailto:INFO@OMEGA-PRODUCTS.COM)  
 WEBSITE: [WWW.OMEGA-PRODUCTS.COM](http://WWW.OMEGA-PRODUCTS.COM)

## THREE COAT SYSTEM DETAILS

### TYPICAL CONTROL JOINT

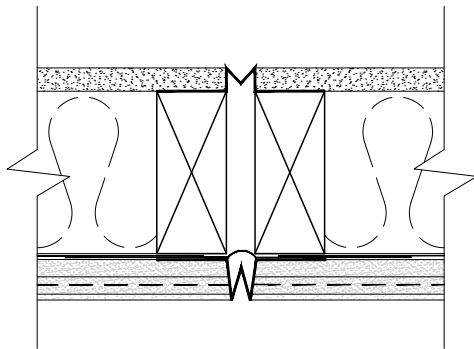
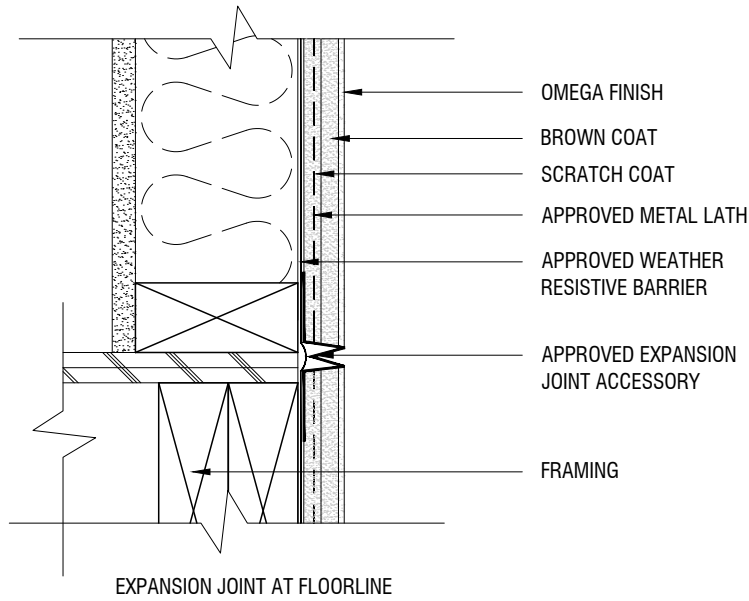
SCALE: 3"=1'-0"

DRAWING NO.: TCS 04.00

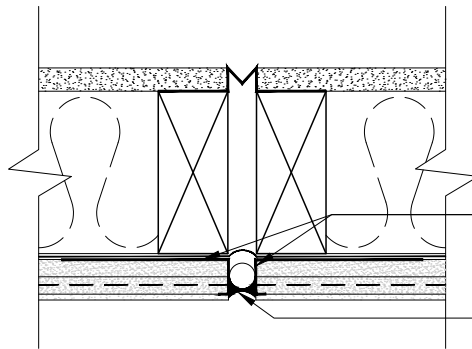
DRAWN: MARCH 2017

### NOTES

1. AN OPTIONAL FLASHING MEMBRANE MAY BE USED BEHIND THE EXPANSION JOINT.



VERTICAL EXPANSION JOINT WITH APPROVED EXPANSION JOINT ACCESSORY



VERTICAL EXPANSION JOINT WITH BACKER ROD AND SEALANT

APPROVED CASING BEAD

APPROVED BACKER ROD AND SEALANT

THE ARCHITECTURE, ENGINEERING, AND DESIGN OF THE PROJECT USING OMEGA PRODUCTS IS THE RESPONSIBILITY OF THE PROJECT'S DESIGN PROFESSIONAL. ALL SYSTEMS MUST COMPLY WITH LOCAL BUILDING CODES AND STANDARDS. THIS DETAIL IS FOR GENERAL INFORMATION AND GUIDANCE ONLY, AND OMEGA SPECIFICALLY DISCLAIMS ANY LIABILITY FOR THE USE OF THIS DETAIL AND FOR THE ARCHITECTURE, DESIGN, ENGINEERING, OR WORKMANSHIP OF ANY PROJECT. THE PROJECT DESIGN PROFESSIONAL DETERMINES, IN ITS SOLE DISCRETION, WHETHER THIS DETAIL OR A FUNCTIONALLY EQUIVALENT ALTERNATIVE IS BEST SUITED FOR THE THE PROJECT. USE OF A FUNCTIONALLY EQUIVALENT DETAIL DOES NOT VIOLATE OMEGA'S WARRANTY. THIS DETAIL IS SUBJECT TO CHANGE WITHOUT NOTICE. CONTACT OMEGA TO INSURE YOU HAVE THE MOST RECENT VERSION.



CORPORATE OFFICE  
1681 CALIFORNIA AVE., CORONA, CA 92881  
E-MAIL: [INFO@OMEGA-PRODUCTS.COM](mailto:INFO@OMEGA-PRODUCTS.COM)  
WEBSITE: [WWW.OMEGA-PRODUCTS.COM](http://WWW.OMEGA-PRODUCTS.COM)

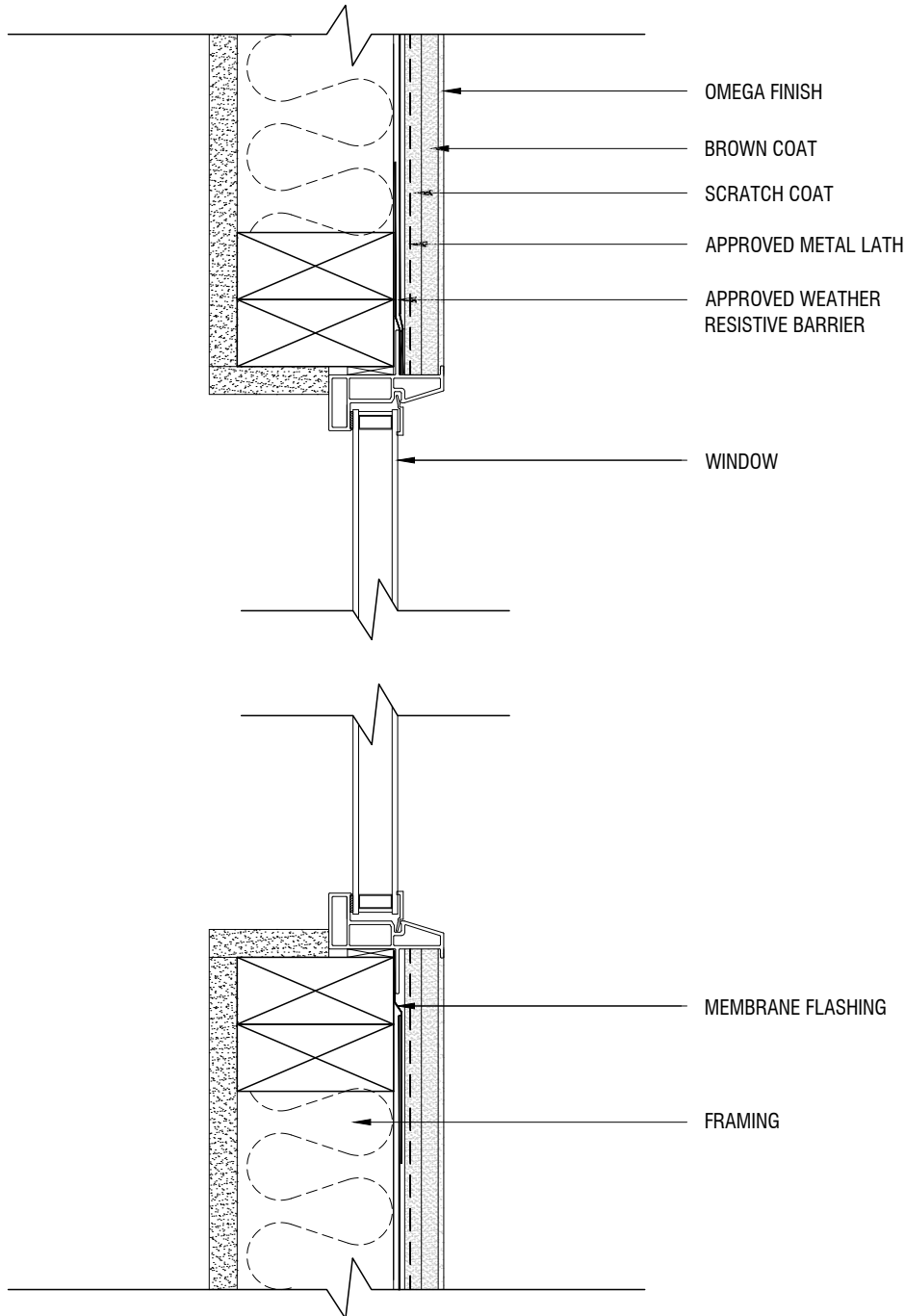
## THREE COAT SYSTEM DETAILS

### TYPICAL EXPANSION JOINTS

SCALE: 3"=1'-0"

DRAWING NO.: TCS 05.00

DRAWN: MARCH 2017



THE ARCHITECTURE, ENGINEERING, AND DESIGN OF THE PROJECT USING OMEGA PRODUCTS IS THE RESPONSIBILITY OF THE PROJECT'S DESIGN PROFESSIONAL. ALL SYSTEMS MUST COMPLY WITH LOCAL BUILDING CODES AND STANDARDS. THIS DETAIL IS FOR GENERAL INFORMATION AND GUIDANCE ONLY, AND OMEGA SPECIFICALLY DISCLAIMS ANY LIABILITY FOR THE USE OF THIS DETAIL AND FOR THE ARCHITECTURE, DESIGN, ENGINEERING, OR WORKMANSHIP OF ANY PROJECT. THE PROJECT DESIGN PROFESSIONAL DETERMINES, IN ITS SOLE DISCRETION, WHETHER THIS DETAIL OR A FUNCTIONALLY EQUIVALENT ALTERNATIVE IS BEST SUITED FOR THE THE PROJECT. USE OF A FUNCTIONALLY EQUIVALENT DETAIL DOES NOT VIOLATE OMEGA'S WARRANTY. THIS DETAIL IS SUBJECT TO CHANGE WITHOUT NOTICE. CONTACT OMEGA TO INSURE YOU HAVE THE MOST RECENT VERSION.



CORPORATE OFFICE  
 1681 CALIFORNIA AVE., CORONA, CA 92881  
 E-MAIL: [INFO@OMEGA-PRODUCTS.COM](mailto:INFO@OMEGA-PRODUCTS.COM)  
 WEBSITE: [WWW.OMEGA-PRODUCTS.COM](http://WWW.OMEGA-PRODUCTS.COM)

## THREE COAT SYSTEM DETAILS

### TYPICAL TERMINATION AT WINDOW HEAD AND SILL

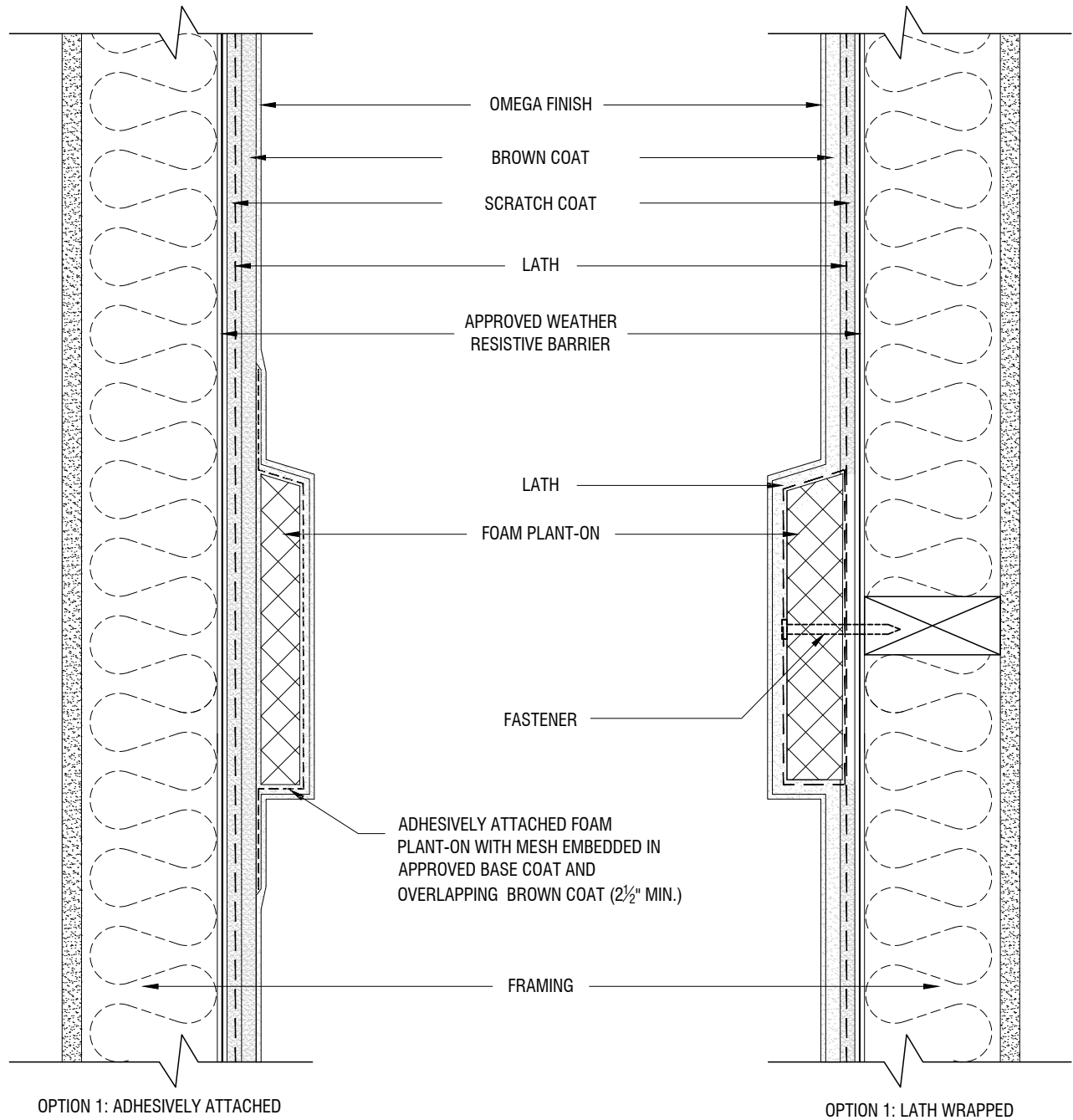
SCALE: 3"=1'-0"

DRAWING NO.: TCS 06.00

DRAWN: MARCH 2017

NOTES

- 1. OPTION 1 PREFERRED.



THE ARCHITECTURE, ENGINEERING, AND DESIGN OF THE PROJECT USING OMEGA PRODUCTS IS THE RESPONSIBILITY OF THE PROJECT'S DESIGN PROFESSIONAL. ALL SYSTEMS MUST COMPLY WITH LOCAL BUILDING CODES AND STANDARDS. THIS DETAIL IS FOR GENERAL INFORMATION AND GUIDANCE ONLY, AND OMEGA SPECIFICALLY DISCLAIMS ANY LIABILITY FOR THE USE OF THIS DETAIL AND FOR THE ARCHITECTURE, DESIGN, ENGINEERING, OR WORKMANSHIP OF ANY PROJECT. THE PROJECT DESIGN PROFESSIONAL DETERMINES, IN ITS SOLE DISCRETION, WHETHER THIS DETAIL OR A FUNCTIONALLY EQUIVALENT ALTERNATIVE IS BEST SUITED FOR THE THE PROJECT. USE OF A FUNCTIONALLY EQUIVALENT DETAIL DOES NOT VIOLATE OMEGA'S WARRANTY. THIS DETAIL IS SUBJECT TO CHANGE WITHOUT NOTICE. CONTACT OMEGA TO INSURE YOU HAVE THE MOST RECENT VERSION.



CORPORATE OFFICE  
 1681 CALIFORNIA AVE., CORONA, CA 92881  
 E-MAIL: INFO@OMEGA-PRODUCTS.COM  
 WEBSITE: WWW.OMEGA-PRODUCTS.COM

THREE COAT SYSTEM DETAILS

TYPICAL FOAM PLANT-ONS

SCALE: 3"=1'-0"

DRAWING NO.: TCS 07.00

DRAWN: MARCH 2017