

1 FINISH OPTIONS

Stucco remains the most popular exterior cladding in the United States because of its natural beauty, durability, low maintenance requirements, and wide variety of design possibilities. With all those design possibilities, it can feel overwhelming to choose a stucco product, texture, and color for a building or home. As the leading stucco manufacturer, Omega Products International designed this color chart to help with the selection process. There are three basic steps that need to be considered when selecting a stucco finish:

1. Select the type of finish.
2. Select the desired texture.
3. Select the color(s).

These steps can be generally worked on in this order but are often interdependent. For example, the desired texture may not be available in an acrylic-based finish, or a dark color may not be available in a cement-based finish.

The information in this chart is intended to help determine which product may be the best option for a project. However, it is recommended that a professional plaster applicator be involved in the final selection of the product, texture, and color.

Step 1. Choosing the Finish Type.

Omega's finishes can be divided into two general product types: cement-based stucco finishes or acrylic-based textured finishes. Both types of finishes can achieve similar, though not identical, appearances, but they have distinct advantages and limitations that should be considered when making a selection.

Cement-based Finishes



ColorTek is a premium, factory-blended family of cement-based finishes that are very similar to the traditional stucco finishes that have been used for hundreds of years. These economical finishes are one of the longest-lasting, most durable, lowest maintenance exterior cladding options. In addition, they are naturally fire, impact, and insect resistant.

ColorTek is manufactured using cement, hydrated lime, graded aggregates, and proprietary performance-enhancing additives. It comes in five aggregate combinations, shown on the textures page, that allow design flexibility and a variety of finish textures.

ColorTek stucco is available in Base 2 (grey), Base 10 (white), Base 1 (white/grey), and Base 5 (dark grey), which may be colored in the field using the Omega ColorPak System. Alternatively, ColorTek is offered as a factory mixed colored stucco; minimum quantities may apply when ordering factory-blended products.



Travertino is a cement-based interior/exterior finish designed to achieve a variety of sedimentary stone appearances, such as travertine, limestone, and sandstone. Its texture can range from distressed to smooth and can be carved or cast into shapes. Travertino is an excellent choice to create a beautiful, warm stone appearance with a lower cost, lower weight, and shorter lead time than real stone.

Acrylic-based Finishes

Omega's acrylic-based finishes use high quality acrylic resin mixed with graded aggregates to create textured finishes that appear similar to traditional stucco finish. Acrylic-based textured finishes have improved resistance to cracking, moisture, efflorescence, and staining compared cement-based stucco. They incorporate Dirt Pickup Resistance (DPR) technology that minimizes dirt accumulation for easy maintenance and are less prone to color modeling.

Omega's acrylic finishes are available in three different bases: pastel for light medium colors, tint for medium to dark colors, and accent for darker colors. These bases can be colored using the Omega Color Bottle system or factory tinted.

Omega offers four categories of acrylic finishes that are described below. Each of these categories has a wide variety of textures that are shown on the textures page.

OmegaFlex Finishes are made for residential and commercial applications over three coat and one-coat stucco systems. OmegaFlex is the most economical acrylic-based finish option and cannot be used with AkroFlex EIF Systems.

AkroFlex Finishes are designed for Omega's commercial EIF systems. AkroFlex can also be applied over three coat and one-coat stucco systems.

AkroLastic Finishes are textured elastomeric finishes that provide greater weather resistance and elasticity compared to standard acrylic finishes, which allows it to bridge hairline cracks. AkroLastic is available in all AkroFlex standard textures.

AkroLastic ProPlus Finishes are Omega's most advanced textured finishes. ProPlus offers improved elasticity, weather resistance, and stain resistance compared to standard acrylic and elastomeric finishes.



Visit Omega's website for a more in-depth comparison and additional product information.

Finish Comparison Chart. This chart compares relative performance of the finish options.

FINISH PROPERTY:	COLORTEK	OMEGAFLEX	AKROFLEX	AKROLASTIC	PROPLUS
Crack Resistance	★	★★★	★★★	★★★★	★★★★★
Dirt and Stain Resistance	★★	★★★	★★★★	★★★★	★★★★★
Color Mottling and Efflorescence Resistance	★★	★★★★	★★★★	★★★★	★★★★★
Vapor Permeability	★★★★★	★★★	★★★	★★★	★★
Durability	★★★★★	★★★	★★★	★★★	★★★★
Color Options	★★★	★★★★	★★★★	★★★★	★★★★
Cost of Material	\$	\$\$\$	\$\$\$\$	\$\$\$\$	\$\$\$\$\$

COLOR & TEXTURE COLLECTION



Photo courtesy of Shea Homes / Encanterra

MANUFACTURING A COMPLETE LINE OF WALL SYSTEMS & FINISHES

Omega Products International is the leading stucco manufacturer in the United States. All products are manufactured in the USA at our high-tech facilities, to our exacting quality standards. We use only the finest quality materials to ensure consistent and vibrant colors. Our products are backed by Omega's industry-leading technical support and system warranties, which have helped make Omega the professional's choice since 1974.



- ColorTek Stucco Finishes
- 100% Acrylic-Based Stucco Finishes
- Crack Isolation Systems
- Diamond Wall One Coat Stucco Systems
- Super Cement Three Coat Systems
- AkroFlex Exterior Insulation & Finish Systems (EIFS)
- Masonry Adhered Veneer Systems (MAVS)
- Water & Air Barrier Coatings
- EPS Foam Shape Coatings
- Performance Enhancing Admixtures
- Primers & Coatings
- Bonders, Cleaners & Sealers



Omega RapidPrime and AkroFlex Primer are primers for Omega acrylic finishes, coatings, and similar products designed to promote bond strength, color consistency, and uniform suction while increasing water resistance and finish coverage. They can be applied without waiting for cement-based substrates to drop in pH, thus saving time and money.



Valentino Decorative Plaster provides speciality interior and exterior decorative finishes that add classic beauty to any wall. Valentino has a full line of lime-based finishes, including true Venetian plaster.



OmegaCoat and OmegaCoat Plus are spray-on cement-based coatings (fog coats) that are used to re-color or refresh unpainted cement-based stucco finishes. Fog coat cures to become an integral part of the stucco surface and is much more resistant to fading, chipping, or peeling than paint. OmegaCoat Plus has improved adhesion and water-resistance, plus it reduces the likelihood of color streaking and efflorescence.



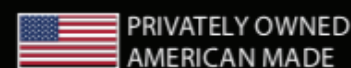
MAVS Masonry Mortar & Grout is a premium mortar used for grouting veneer, thin brick, pavers, precast, and similar joints; plus, for setting and grouting full brick, CMU, and block. It is available in a range of standard and custom colors, including the stucco colors shown in this chart. MAVS Masonry Mortar & Grout is part of Omega's Masonry Adhered Veneer Systems (MAVS) family of products that are engineered to handle all levels of masonry applications. Manufactured to the highest quality control standards and backed by Omega's industry leading system warranties, MAVS is an excellent choice for your next masonry project.



Omega Products International - Corporate
1681 California Ave., Corona, CA 92881
Phone: (951) 737-7447 • Fax: (951) 520-2594
info@omega-products.com

DISTRIBUTED BY

OMEGA PRODUCTS ARE PROUDLY MADE IN THE USA
For SDS, Data Sheets, System Specs, Technical Support Visit:
omega-products.com



A FULL LINE OF PREMIUM PRODUCTS FOR YOUR WALL SYSTEM NEEDS
omega-products.com

5420 Aldrin Court
Bakersfield, CA 93313
Phone: (661) 835-0155

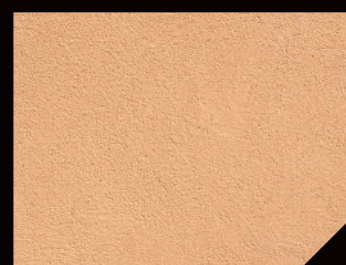
5576 Wynn Road
Las Vegas, NV 89118
Phone: (702) 739-9040

8111 Fruitridge Road
Sacramento, CA 95826
Phone: (916) 635-3335

6101 Dexter Street
Commerce City, CO 80022
Phone: (303) 736-4470

2 TEXTURES

Step 2. Choosing a Texture. Omega's finishes can achieve a wide variety of textures. The texture is created by the combination of finish material and application method. Below are the most common finish options for each finish category discussed in Step 1, which have been applied using the standard float method. Additional finish options may be available and additional textures are possible using different application methods. Actual texture results depend on the application method, job site and substrate conditions, and other factors. The cost to achieve these textures vary due to the material and labor required, so consult your applicator for options and costs. Visit Omega's website for additional information on finish and texture options.



SEMI-SMOOTH

Semi-Smooth Finish utilizes approximately 0.3 mm quartz aggregates and can be troweled to achieve an imperfect smooth Mission-style or Old World appearance. Ideal for AkroTique.



DELTA

Delta Finish utilizes approximately 1.5 mm quartz aggregates and can be troweled to create a medium sand finish or troweled to achieve a lace texture.



PEBBLE BEACH

Pebble Beach Finish is part of the Desert Series Finishes and utilizes ~1.5 mm silica aggregates to produce a uniform medium sand finish. Requires Desert Series color bottle.



SAHARA SAND

Sahara Sand Finish is part of the Desert Series Finishes. It is available in either standard (~1.0 mm) and fine (~0.8 mm) silica aggregates that produce a uniform medium to fine sand finish. Requires Desert Series color bottle.



CIRCLETEX

CircleTex Finishes utilize quartz aggregates and can produce a true worm driven appearance. It is available in either a medium (~1.5 mm) or coarse (3 mm) aggregate finish. (CircleTex Coarse pictured)



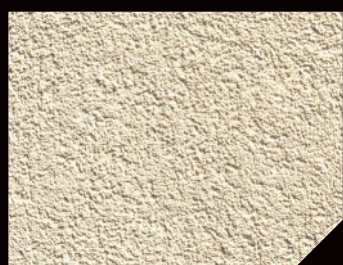
MALIBU

Malibu Finishes utilize quartz aggregates and come in the following options: Malibu 12 (~1.5 mm): Coarse sand finish with slight worm driven appearance. Malibu 16 (~1.2 mm): Medium sand finish with slight worm driven appearance. Malibu 20 (~0.8 mm): Fine sand finish with reflective quartz aggregate. Malibu Fine (~0.8 mm): Imperfect smooth type finish with irregularities. (Malibu 16 pictured)

[View Additional Textures](#)



Visit Omega's website to learn more about additional acrylic finishes and textures.



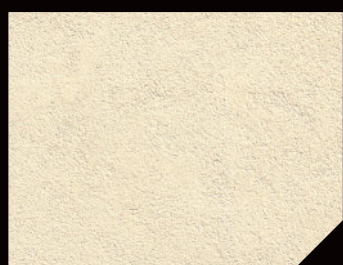
OMEGAFLEX COARSE

OmegaFlex Coarse Finish utilizes approximately 1.5 mm quartz aggregates and can be troweled or floated to achieve a heavy sand finish.



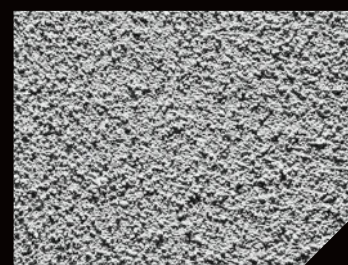
OMEGAFLEX MEDIUM

OmegaFlex Medium Finish utilizes approximately 0.8 mm quartz aggregates and can be troweled or floated to achieve a medium sand finish.



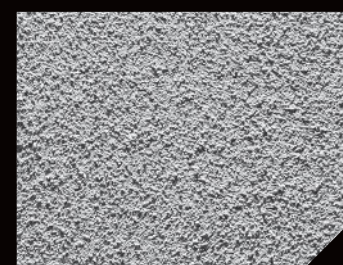
OMEGAFLEX FINE

OmegaFlex Fine Finish utilizes approximately 0.3 mm quartz aggregates and can be troweled or floated to achieve an imperfect smooth type finish. Ideal for AkroTique.



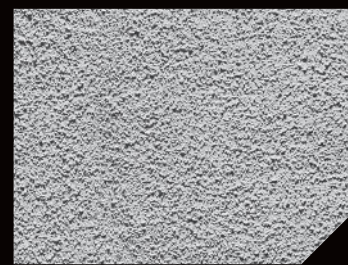
COARSE

Used to create heavy laced texture, sand finish, or machine dash finish.



16/20

Used to create traditional texture, sand finish, or machine dash finish.



20/30

Used to create a fine texture or sand finish.



30/30

Used to create a uniform fine sand finish.



SMOOTH COAT

Used to create a smooth Santa Barbara or Mission type finish.

TRAVERTINO



DISTRESSED



SMOOTH

[View Additional Textures](#)



Visit Omega's website to learn more about various textures and application methods possible using ColorTek finishes.

3 COLORS

Step 3. Choosing the Color(s).

CUSTOM COLORS AVAILABLE

The standard colors on this chart have the shortest lead time and are the most economical color options that Omega offers. However, if one of these standard colors does not work for your project, Omega specializes in matching a wide spectrum of custom colors utilizing our state-of-the-art color labs. Provide a color sample or color number from most paint manufacturers, and we can match it. Additional fees may apply.

To request a custom color match or a sample, use Omega's Sample Request System on our website.

[Request a Sample](#)



Below are Omega's 45 standard colors that are available in any of our cement-based or acrylic-based finishes. These colors utilize Omega's UV-stable powder pigments or liquid colorants that add long-lasting beauty to any project.

NOTE: Previously, there were separate color charts for ColorTek and acrylic-based finishes. This is the first chart to cover both families of finishes. All these colors were on one or both of the previous charts; scan the QR code to view a chart that crosses over the new color numbers with the old. Previous standard colors are still available to order.



1C005 OMEGA WHITE BASE 10	1C105 COOL GREY BASE 2	1C305 ROCK GREEN BASE 2	1C435 ROUGH KHAKI BASE 2	1C480 SONOMA BASE 2
1C010 CHENILLE BASE 10	1C110 CLOUD COVER BASE 2	1C310 SIERRA LEONE BASE 2	1C440 CAPPUCCINO BASE 2	1C605 WESTMINSTER GOLD BASE 2
1C015 FLORAL WHITE BASE 10	1C115 THUMPER BASE 2	1C315 FEATHERLY BASE 2	1C445 PRAIRIE DOG BASE 2	1C610 LIGHT TOAST BASE 10
1C020 SNOW BASE 10	1C120 SHARK GREY BASE 2	1C405 BARN SWALLOW BASE 2	1C450 MOCHA BASE 2	1C615 HARVEST GOLD BASE 2
1C025 COCONUT BASE 10	1C125 CHINCHILLA BASE 2	1C410 BISON BEIGE BASE 2	1C455 SURREY BEIGE BASE 2	1C620 BRUSHED PEACH BASE 10
1C030 MILKY QUARTZ BASE 10	1C130 CLOUD BASE 2	1C415 MOONSHINE BASE 2	1C460 YUCCA BASE 2	1C625 CHEESECAKE BASE 10
1C035 QUAKE BASE 10	1C135 PURPLE MOON BASE 2	1C420 TAVERN TAUPE BASE 2	1C465 SAFARI TAN BASE 2	1C705 CREAM ROSE BASE 2
1C040 BONE BASE 2	1C140 TRUE GREY BASE 2	1C425 VANILLA CREAM BASE 2	1C470 ONION SKIN BASE 2	1C710 VALENTINE BASE 2
1C045 ARCTIC ICE BASE 10	1C145 STONE AGE BASE 2	1C430 BIRCH BASE 2	1C475 DOVER PLAINS BASE 2	1C715 ENVY BASE 10

The correct finish base must be used in order to create the colors shown on this chart. For ColorTek, the base is listed below each color. For the acrylic-based finishes, all standard colors use the standard (pastel) base.

IMPORTANT NOTE: The colors represented by these samples are approximate color only. Actual color will vary due to climatic conditions, job conditions, method of application, finish material, mixing techniques, and other factors that are beyond the control of Omega Products International. Final selection must be made from actual product applied by the applicator under actual job conditions to ensure color accurately.



Visit Omega's website for **Light Reflectance Values (LRVs)**